

oerli®
S W I T Z E R L A N D



OS4™
MAKING THE DIFFERENCE
WITH EVEN MORE VERSATILITY

EYE SURGERY. SWISS MADE.





MAKING THE DIFFERENCE IN EVERY SURGICAL SITUATION

«I'm working with different Oertli surgical platforms for more than 20 years. In contrast to other platforms, it's like working with your best friend. You can trust not only in routine cases but in every challenging and complicated surgical situation. Performance, safety, ease of use and continuous innovation are unique!»

Dr. Karsten Klabe

Breyer, Kaymak & Klabe Augenchirurgie,
Düsseldorf, Germany

PERFECTION TO THE CORE

Using its innovative developments and high-quality products, Oertli is continuously setting new standards in cataract, vitrectomy and glaucoma surgery. Oertli's surgical platforms, technologies and instruments allow surgeons and OR personnel to perform surgeries in a safer, easier and more efficient way providing better results for patients.

So as to ensure perfect processes and outcomes, Oertli surgical platforms and their corresponding instruments form a closed surgical system. Each instrument is compatible with all Oertli surgical devices, provided that the relevant function is available.

It goes without saying that Oertli is consistently committed to quality in its instruments, handpieces, tips and auxiliaries. Instruments are developed in Berneck, Switzerland, and manufactured with maximum precision, to ensure surgeons can totally rely on their tools.



Christoph Bosshard
CEO

Thomas Bosshard
Leiter Marketing & Verkauf

CONTENT

OS 4 – The next generation	6	Boasting numerous new features, the next generation of Oertli's all-in-one platform provides even greater ease of use, precision and safety in ophthalmic surgery.
Easy and safe operation	14	Whether in cataract surgery, vitreoretinal surgery or glaucoma surgery – any intervention must be performed safely, easily and efficiently. That is why the OS 4 surgical platform has been designed to be amazingly user-friendly.
The multifunctional pedal	15	With the OS 4's wireless dual-linear pedal, surgeons have an incredibly sensitive and powerful control centre at their disposal.
Areas of application	16	Vitreectomy surgery In vitrectomy surgery, the OS 4 brings about superb results thanks to the well-thought-out fluidics concept and innovative instruments
	22	Glaucoma surgery In the treatment of glaucoma, the HFDS ab interno MIGS technique by Oertli delivers excellent long-term results.
	24	Cataract surgery Thanks to Oertli innovations such as easyPhaco or HF capsulotomy, cataract surgery is now faster, safer and calmer than ever before.
Performance spectrum	30	The OS 4 offers superb precision and impressive performance in cataract, glaucoma and vitrectomy surgery.

OS 4TM

THE NEXT GENERATION

The new OS 4 introduces the next generation of retinal, glaucoma and cataract surgery. Numerous innovative features have been added to Oertli's all-in-one platform, providing even greater ease of use, precision and safety. Never before has technology in ophthalmic surgery been so highly developed, varied, efficient and effective.

The new generation of the OS4 is another quantum leap in retinal, glaucoma and cataract surgery. The revolutionary enhancement of the all-in-one platform by Oertli makes work in the OR noticeably easier and faster. The highlights undoubtedly include the two Power LED light sources boasting 45% more power output, the extended control range for further application possibilities as well as the high-resolution contrast vision with its colour-adjustable Power LED Plus.

The integrated endo laser no longer requires manual operation on the microscope thanks to the fully automatic laser user protection filter. The multifunctional pedal offers over 100 setting options – thus being the favourite control for every surgeon. The phaco test is performed in record time, which greatly accelerates preparation for surgery. All over, the OS 4 ensures speediness in the OR – without compromising on comfort or safety.

Make the difference –
by using the OS 4 by Oertli.



OS 4™:

EVEN MORE SPEED

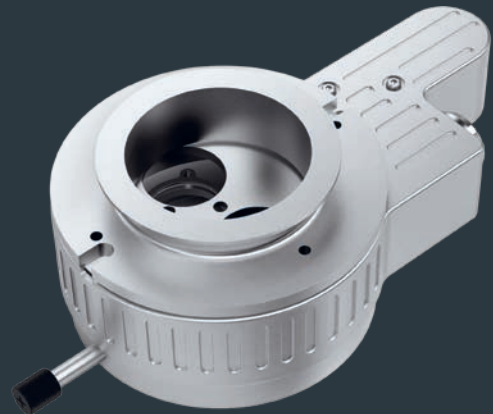
EVEN MORE PRECISION

EVEN MORE SAFETY

NEW FEATURE

Laser integration: More safety,
fully automated laser user protection filter

- Fully automated laser user protection filter – for reliable eye protection during surgery
- Filter glass is automatically inserted – for swift and easy laser preparation
- Filter glass only active during laser output – for consistently clear vision during anterior and posterior segment intervention

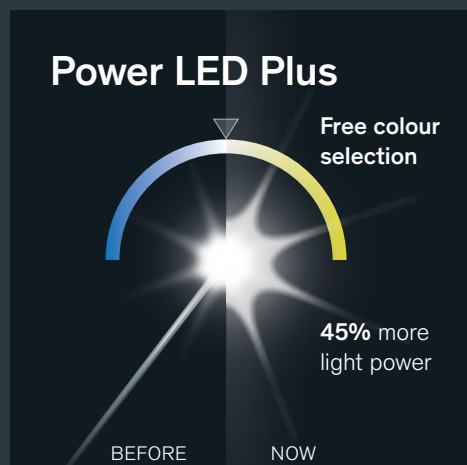


page 21

NEW FEATURE

Light: 45% more power, maximum visibility

- Two Power LED light sources with 45% more light output¹ – for optimised illumination and visualisation during all manoeuvres extending as far as the periphery
- Expanded control range from high to low lumens – for increased patient and user safety through reduced phototoxic exposure²
- Ideal in combination with 3D microscope for low lumens
- Power LED Plus with free colour selection on the touch glass screen – for high-resolution contrast viewing to visualise even the finest tissue structures



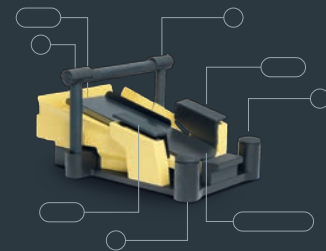
page 18

OS4™ THE NEXT GENERATION

NEW FEATURE

Pedal: Multifunctional with over 100 setting options

- High-performance multifunctional pedal – for intuitive navigation through all surgical stages
- Wide range of pedal assignments – for individual control by the surgeon
- Laser controllable via the same pedal – for delay-free use of the laser function
- Flexible changeover between Cut/Aspiration and Aspiration/Cut – for immediate reaction to any changes in surgical situations



page 15

NEW FEATURE

Phaco: Speedier readiness, greater controllability

- 70% faster phaco test³ – for speedier surgical preparation without compromising safety
- Vacuum override function – for a selectable reinforcement of holdability and optimum use of the occlusion
- Convincing easyPhaco technology – for unprecedented chamber stability, impressive followability, less ultrasound energy in the eye and optimally protected endothelium

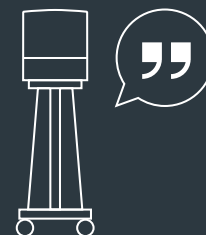
+70%
faster

page 26

NEW FEATURE

User comfort: Even more user-friendly and communicative

- Acoustic voice confirmations – for focused and autonomous work during the entire surgery and full control of settings
- Language output in five languages (German, English, French, Italian and Spanish) – for direct communication in the OR
- Acoustic laser protection signals – for more operating safety for the OR team



page 14

UNIQUE FEATURE

Fluidics: Unique 3-pump system

- Peristaltic, Venturi and SPEEP pump
- For all applications in vitrectomy, glaucoma and cataract surgery; immediately and individually controllable via the same cassette
- Unique SPEEP pump controls flow and vacuum for safe conditions at maximum efficiency

READY FOR THE NEXT GENERATION?

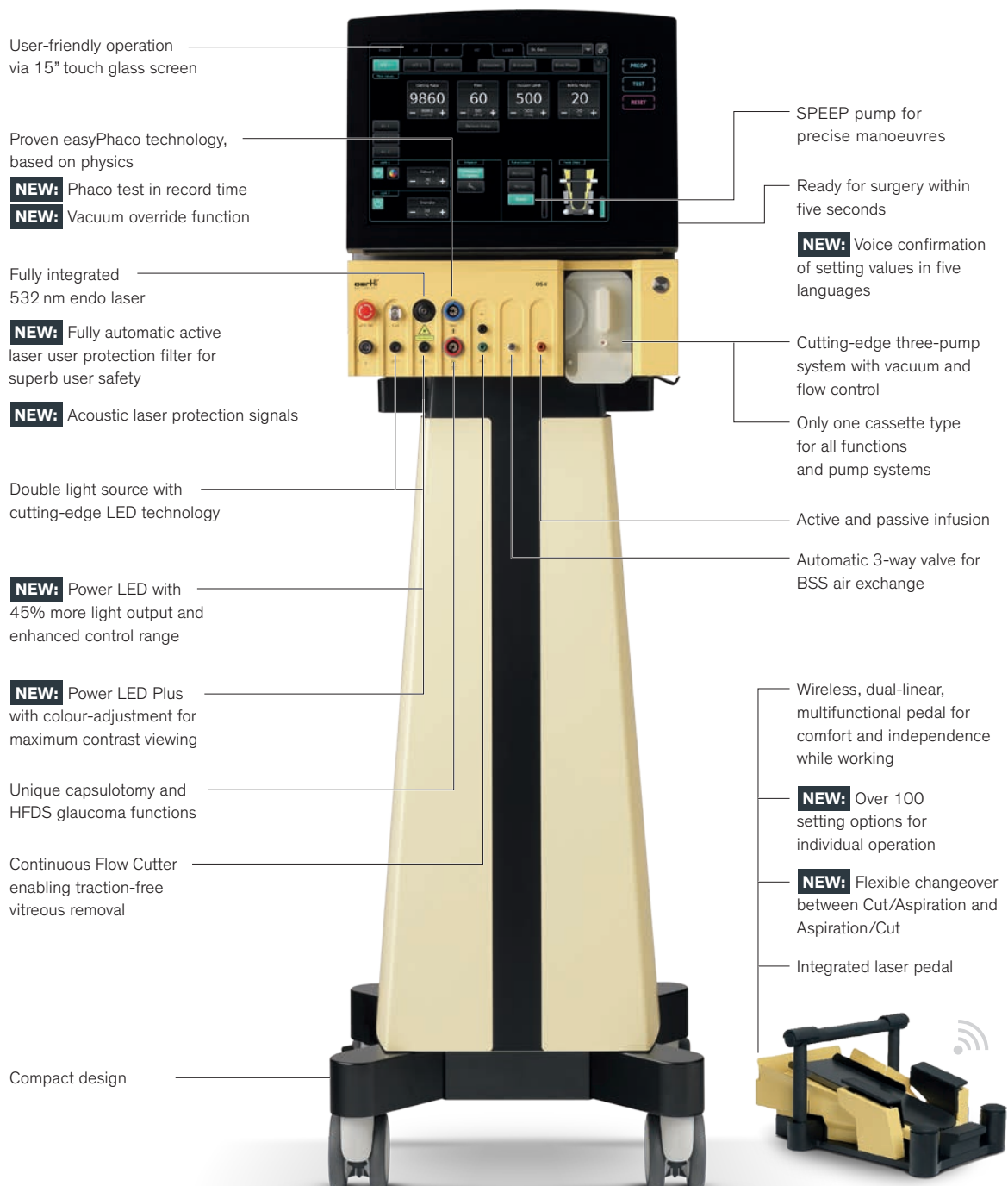
The OS 4 surgical platform uses the laws of physics to make ophthalmic surgery even safer, easier and more efficient. The heart of the unit is the three-pump system with vacuum and flow control and the innovative SPEEP pump, which can control flow and vacuum simultaneously. The cutting-edge LED technology with greatly enhanced light output provides optimised visualisation and high-resolution contrast viewing. The Continuous Flow Cutter ensures traction-free vitreous removal. Last but not least, the fully integrated 532 nm endo laser with an automated laser user protection filter opens up unprecedented possibilities in laser control.

**Make the difference –
by using Oertli's OS 4.**

Vitrectomy	●
Glaucoma	●
Cataract	●



OS 4™ – ALL ADVANTAGES AT A GLANCE



FABULOUS FLUIDICS THANKS TO THE THREE-PUMP SYSTEM



The heart of the platform is the three-pump system with vacuum and flow control and the innovative SPEEP pump, capable of controlling flow and vacuum at the same time. The OS4 surgical platform makes clever use of the laws of physics, which results in safer, easier and more efficient ophthalmic surgery than ever experienced before.

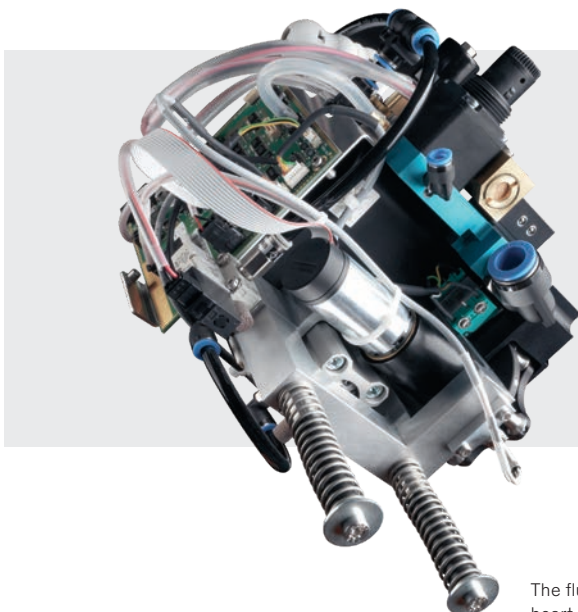
Fluidics based on physics – perfection in use

As the inventor of the first dual pump system incorporating the Venturi and the peristaltic pump in one surgical platform, Oertli established itself early as an innovative leader in the field of fluidics. The OS4 is just another impressive example of how perfectly Oertli understand its use of fluidics and the laws of physics.

The ground-breaking pump technology, which features vacuum and flow control, forms the very heart of the OS4. Oertli's three-pump system does not only include the advantages of a Venturi pump and a peristaltic pump, but also offers the beneficial features of its exceptional SPEEP pump. This modulation ensures controlled flow and vacuum

to the same degree. In their finest form, flow and vacuum turn into a dynamic tool, enabling extremely precise surgery – in the anterior segment, as a result of easyPhaco and in the posterior segment, thanks to the Continuous Flow Cutter. Only one cassette is required for all functions and pump systems, which accelerates processes even more and makes procedures easier than ever before.

For any type of manoeuvre, the appropriate pump system is ready for use at once and any time. As an additional advantage, active and passive infusion can be freely selected at any time as well.



SPEEP Pump

The term SPEEP is composed of «Speed» and «Precision». The SPEEP pump relies on the principle of the peristaltic pump. Both the flow and the vacuum can be regulated independently of each other, which allows precise control of holdability regardless of the type of tissue. The direct response and acoustic feedback during occlusion ensure safe and stress-free work while maximising efficiency.

The fluidic unit is the heart of the OS4

COMFORTABLY FAST – INTUITIVELY CLEVER

The OS 4 boasts a highly developed surgical technology. This does not mean, however, that the operating platform is difficult to use. On the contrary: everything about the OS 4 is clear and easy. This makes operation comfortable and easy to understand for both OR personnel and the surgeon. The operating platform is ready for start extremely quickly thanks to its own software technology. Following a switch-on time of about 5 seconds, the system is ready for start. This makes changeover between surgeries very short. The OS 4 perceptibly enhances performance in the OR, and this efficiency reduces costs as well.

Touch glass screen

The no-frills 15-inch touch screen with a high-quality glass front directly leads the eye to the right function. The graphic user interface is easy, user-friendly and provides for absolute stability in operation. Surgeons and OR personnel are immediately in focus and can master functions intuitively within seconds.

Voice confirmations

User-friendly voice confirmations in five individually adjustable languages (English, German, French, Italian, Spanish) ensure focused and autonomous work throughout the entire surgery. The surgeon always retains full control over the settings. Acoustic laser protection signals ensure additional operational safety for the entire surgical team.

Instrument table

The optional instrument table (80 × 35 cm) can be installed in any desired position. When not in use, the table is quickly folded away and can be stored in a space-saving manner at the side.



MULTIFUNCTIONAL PEDAL

TOP-CLASS PEDAL

The wireless and dual linear foot pedal is the multifunctional control centre of the OS4. Made of robust metal and processed with utmost precision, the pedal responds to the commands of the surgeon sensitively and without any delay.

Unique dual linear versatility

In the OS4 pedal, the dual linear control can be perfectly matched to the surgeon's wishes and needs. The modern multifunctional pedal allows comfortable and independent work while boasting intuitive navigation throughout all surgical steps. Six auxiliary buttons can be assigned to various functions, such as switching between functions or colour settings. Over 100 setting options are available.

Integrated laser pedal

Laser function under perfect control: When using the integrated endo laser, the pedal becomes a true laser pedal – immediately ready for use and controllable without delay.

- Dual linear multifunction pedal for comfortable and independent work
- Wireless communication, pedal can be placed anywhere in the OR
- Running time up to 50 hours, for uninterrupted use over several days
- Laser controllable via the same pedal
- Individually programmable for up to 50 surgeons, personal values can be called up at once and at any time
- Over 100 setting options for individual operation for the surgeon
- Fast and easy programme and function changes
- Integrated rest position



VITRECTOMY SURGERY

OS 4[™] IN VITRECTOMY SURGERY



As a cutting-edge all-in-one platform, the OS 4 sets standards in vitreoretinal surgery in terms of functionality and quality. The new Power LED technology provides peak light conditions. The Continuous Flow Cutter ensures traction-free work and precise portioning of the vitreous body to be removed. In addition, a fully integrated endo laser is available, which can be controlled very easily via the multifunctional pedal.

CALIBURN™ TROCAR SYSTEMS

Unmatched sharpness and precision

In vitrectomy with the OS4, the Caliburn trocar system ensures precise work with exceptionally sharp instruments. The lance-shaped blade is characterised by strong piercing and cutting force. The razor-sharp Caliburn blade reduces the penetration force and results in a perfect cutting geometry in the sclera. The slim tunnel incision allows for superior postoperative wound tightness and thus rapid wound healing.

The trocar with integrated closure membrane prevents the leakage of BSS, air and oil, resulting in constant IOP throughout the entire surgery. Thanks to its excellent holdability and perfect shaft length, the Caliburn trocar offers safety and comfort.

Advantages of the Caliburn™ trocar systems

- Convincing postoperative wound tightness
 - Unique surface finishes for even smoother cuts
 - Smooth insertion of the trocar
 - Integrated, double-slotted sealing membrane for constant IOP during surgery
 - Patented infusion tube with snap lock for increased flexibility
-



GOODLIGHT™ WITH POWER LED

More brightness and homogeneity for even greater safety

Thanks to the new Power LED, the light output in the OS4 has been increased by an additional 45 percent – for perfect illumination and visualisation during all manoeuvres, extending to the periphery.

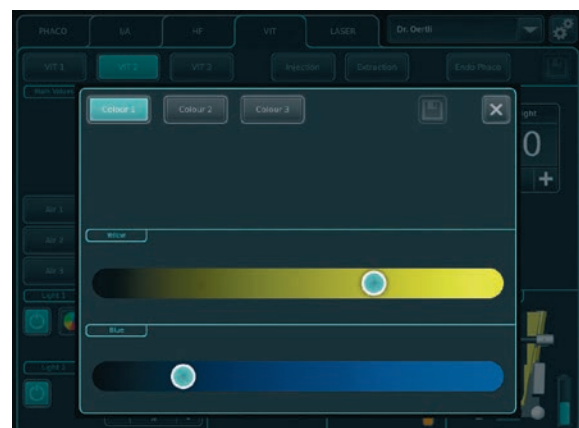
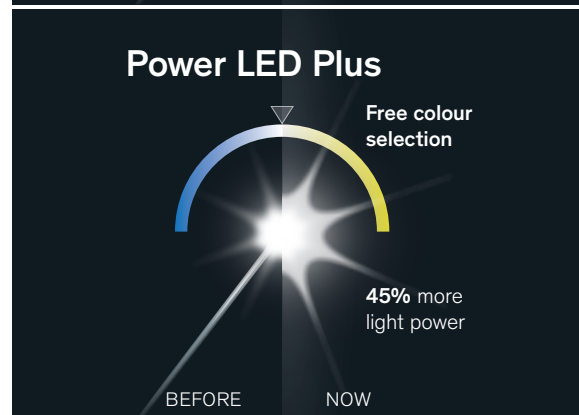
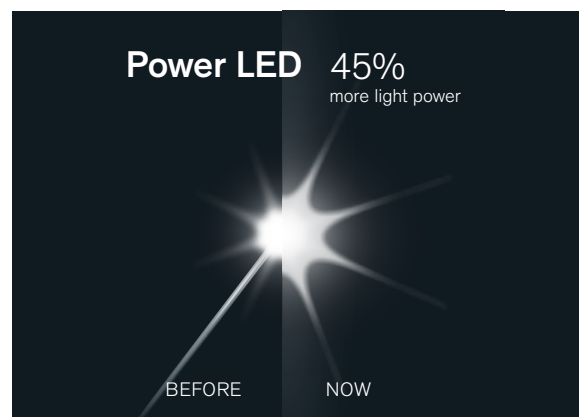
The OS4 has a double light source that provides superb homogeneous illumination thanks to its cutting-edge LED technology. The newly enhanced control range can be combined perfectly with the 3D microscope for low lumens.

Power LED Plus

The colour spectrum of the second light source – the Power LED Plus – is individually adjustable. At the touch glass screen, yellow and blue can be mixed easily and to any extent you desire. This brings about high-resolution contrast viewing where the finest tissue structures can be visualised.

Advantages of GoodLight™ with Power LED

- Latest Power LED technology with double light source for homogeneous illumination and high durability
- Power LED with 45% more light output
- Power LED Plus with free colour selection, yellow and blue can be mixed at the touch glass screen in any way you want
- Increased patient safety as a result of decreased photo-toxic exposure on account of lower setting options
- Enhanced control range for low lumens, perfect combination with 3D microscope
- Extremely homogeneous illumination and high-resolution contrast viewing
- Precise and comfortable Comfort Connector to all endo illuminators



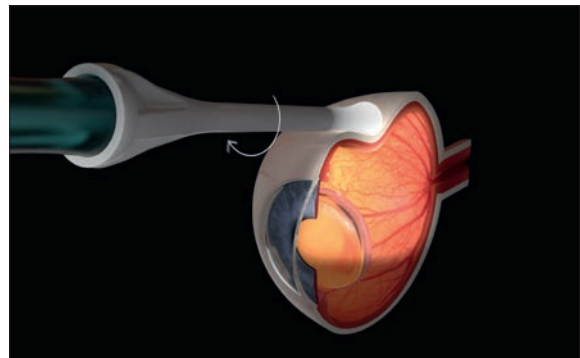
VIPER – ILLUMINATED SCLERAL INDENTOR

Transscleral illumination made easy

Oertli's ViPer illuminated scleral indenter enables simultaneous indenting and transscleral illumination during interventions in the posterior eye segment. The ViPer is quickly and easily attached to the endo illuminators, it improves visibility and greatly facilitates work in the periphery.

Advantages of the ViPer illuminated scleral indenter

- Simultaneous indenting and illumination enables autonomous work
- Improved visibility of the retinal periphery
- Glare-free work without back-scattered light thanks to semi-transparent material
- Homogenous illumination of indented tissues
- Excellent mobility on the globe thanks to smooth material surface
- Suitable for all Oertli endo illuminators



CONTINUOUS FLOW CUTTER

Enjoy traction-free work

Using the fluidics concept based on physics, Oertli has perfected flow and vacuum control. Thanks to Oertli's ingenious use of physics, fluidics can be regulated in the finest gradations using the dual-linear foot pedal.

Following Oertli recently set new standard of cutting force with the dual pneumatic Push-Pull principle and its establishment of traction-free highspeed cutting, the Continuous Flow Cutter now represents a further quantum leap. Where with a standard cutter, the flow is interrupted at every cycle, the Continuous Flow Cutting Concept offers traction-free and perfectly precise flow as well as fast aspiration and ideal portioning of the vitreous body to be removed. The SPEEP pump controls flow and vacuum independently of each other. It thus manifests itself as a directly controllable dynamic tool for extremely precise and highly efficient vitreoretinal surgery.

Advantages of the Continuous Flow Cutter

- Traction-free and continuous aspiration facilitated by the unique SPEEP pump
 - Cutting close to tissues thanks to the minimal distance between the opening and the surface
 - Peak efficiency due to the pneumatic Push-Pull principle invented by Oertli
 - Perfect portioning of the vitreous body thanks to strong holdability and cutting force
 - Doubled cutting rates up to 10,000 cpm for peak efficiency in various applications
-



ENDO LASER WITH PROTECTION FILTER

Fully integrated and fully automated thanks to safety plus

With its new OS4 generation, Oertli has enhanced laser integration by additional beneficiary functions. The fully automated laser user protection filter enables active monitoring and ensures reliable eye protection during laser treatment at the microscope. The fully automated insertion of the filter glass prior to the laser treatment enables the surgical team to save valuable time and effort. Since the filter glass is only active during laser treatment, the view always remains perfectly clear; there are no wavelengths of light that are filtered out. The acoustic laser protection signals provide increased operating safety for the entire OR team.



Fully automated laser user protection filter for reliable eye protection



Advantages of the fully integrated endo laser

- Green 532nm endo laser
- Fully automated laser user protection filter for reliable eye protection during laser treatment
- Active monitoring of the laser user protection filter for safe power output
- Fully automated insertion of the filter glass for safe and efficient laser treatments
- Laser controllable via the same pedal, which saves time and space
- Acoustic laser protection signals for increased operational safety
- Ready for use within a remarkably short time
- An extensive range of laser probes is available



GLAUCOMA SURGERY

OS 4TM IN GLAUCOMA SURGERY

Oertli is the only manufacturer offering surgical platforms with integrated solutions for cataract, glaucoma and vitrectomy interventions. In the surgical treatment of glaucoma, the OS 4 creates remarkable added value in micro-invasive glaucoma surgery (MIGS).

The High Frequency Deep Sclerotomy (HFDS) results in a low complication rate and optimum long-term outcomes in spite of the short intervention time.

HFDS™

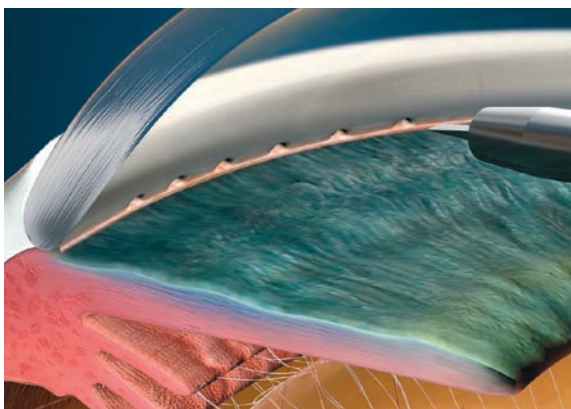
Applied in no time,
successful in the long run

HFDS stands for *High Frequency Deep Sclerotomy*. In microinvasive glaucoma surgery (MIGS), HFDS provides direct access from the anterior chamber to the Schlemm's canal and further into the sclera. The outflow resistance of the trabecular meshwork is thus significantly reduced. The HFDS glaucoma tip is inserted through a paracentesis of 1.2 mm and uses high-frequency diathermy delivery to place six small sclerotomy bags in the iridocorneal angle, which provide an improved outflow of the aqueous humour.

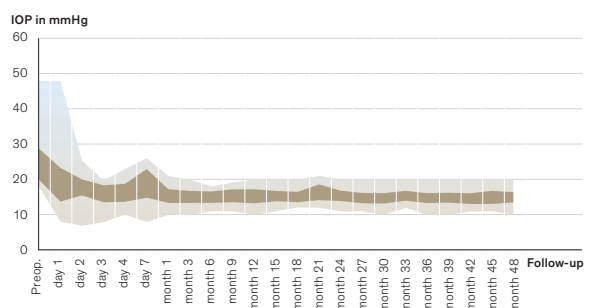
HFDS can be individually applied or combined with cataract surgery, which works perfectly. HFDS is characterised by very short intervention times. Bleb formation (filtration into the subconjunctival space) is avoided, as is fibroblast movement to the sclerotomy. Moreover, there are no corneal scars. The High Frequency Deep Sclerotomy ab interno by Oertli boasts excellent long-term results. If required, an intervention using HFDS can also be repeated.

Advantages of HFDS

- Ideal in combination with cataract surgery or as a single application
- Very short intervention time
- Excellent long-term results
- No Bleb formation, no corneal scars
- Surgery can be repeated if necessary
- Minimal complication rate



Excellent long-term results (48 months) following HFDS procedure*



* B. Pajic, Z. Cvejic, K. Mansouri, M. Resan, and R. Allemann, «High-Frequency Deep Sclerotomy, A Minimal Invasive Ab-interno Glaucoma Procedure Combined with Cataract Surgery: Physical Properties and Clinical Outcome,» Applied Sciences, vol. 10, no.1, p. 218, 2020, doi: 10.3390/app10010218.

CATARACT SURGERY

OS 4TM IN CATARACT SURGERY

The OS 4 makes cataract surgery fast, safe and calm. Phaco emulsification has become even more precise and effective thanks to the easyPhaco technology. On account of HF capsulotomy, capsulorhexis has been given a very gentle method of capsulotomy.

HIGH FREQUENCY- CAPSULOTOMY

The gentle choice

Since its launch in 1991, the high-frequency capsulotomy has proven to be the ideal method for opening the lens capsule in countless cases. By using high-frequency energy, the capsular bag can be easily melted – without the usual tearing with forceps or a needle. It is sufficient to glide gently over the tissue with the capsulotomy tip while delivering diathermy power, even under the iris.

Oertli's HF capsulotomy is particularly suitable for indications such as absent fundus reflex, hypermature cataract, traumatic cataract, intumescent cataract, juvenile cataract. Also in cases of narrow pupil, out-of-control rhexis or rhexis phimosis, the HF capsulotomy brings best results.

Advantages of HF capsulotomy

- Unique capsulotomy procedure using high-frequency diathermy
 - The gentle alternative to capsulorhexis
 - Melting of the capsular bag without tearing with forceps or needle
 - Finely and directly controlled dosing of the HF energy
 - Maximum control, even in the most difficult cases
-



EASYPHACO®

Chamber stability and holdability redefined

By using flow technology based on physics and as a result of precise flow control, easyPhaco enables and facilitates instant aspiration of the lens material resulting in speedy followability. The unique design of the tip provides unrivalled chamber stability. At the same time, a particularly strong holdability is noticeable. Aspiration of the fragments is performed highly efficiently and without any repulsion. The focused axial delivery of ultrasound energy ensures targeted absorption leading directly into the lens fragment.

Faster and stronger

The OS4 superbly demonstrates increased efficiency and effectiveness even before the surgery starts. The new generation boasts a 70% faster phaco test – without making any compromises on safety.

Thanks to the optionally switchable vacuum override function, holdability can be increased on request if necessary. Occlusion, which is perfectly made use of, becomes the best friend for the surgeon.

New easyPhaco® handpiece

The new easyPhaco handpiece offers surgeons optimized phaco performance over the entire product lifetime as well as more user comfort.

No compromises in phaco emulsification

The new piezo crystals ensure optimized phaco performance* over the entire product lifetime.

The shortened cable length promises more user comfort thanks to less weight and additional space savings in processing and storage (standard sterilization container).

Advantages of easyPhaco®

- Utmost chamber stability due to unique tip design
- Outstanding followability thanks to precise flow control
- Vacuum override function for optionally switchable stronger holdability
- Maximum use of occlusion – occlusion will become your best friend
- Focussed axial delivery of ultrasonic energy
- Direct and gentle power transmission right through to the tip
- Efficient fragment aspiration without any repulsion
- 70% faster phaco test



*internal wetlab measurements with aged handpieces, Oertli data on file.

IRRIGATION / ASPIRATION HF-BIPOLAR DIATHERMY

I/A with cleverly thought-out Safety Design

Oertli's I/A instruments make irrigation and aspiration even safer than before. The Quick Tips with Safety Design have an extended shaft length, which allow better sub-incisional access. The reduced aspiration opening brings about better occludability while increasing safety during aspiration and ensuring perfect stability of the anterior chamber. The carefully thoughtout positioning of the aspiration opening prevents unintentional gripping of the capsular bag. Especially in combined use with SPEEP, the Quick Tips offer the highest level of safety.

Advantages of I/A with Safety Design

- Superbly stable anterior chamber conditions
- Easy sub-incision accessibility
- Fast occlusion capability
- Utmost safety standard during capsule cleaning
- Incredibly effective in combination with SPEEP
- Available in sizes ranging from 1.6mm to 2.8mm



Precision in bipolar diathermy

With its trend-setting control system, the OS4 guarantees extremely fine and directly controlled dosage of HF energy, perfectly designed for proven applications of bipolar technology. High-quality titanium tips with cleverly thoughtout geometry and superb material selection make bipolar diathermy a true precision instrument. Even at low power output, the high-frequency diathermy by Oertli creates an extraordinary effect.

Advantages of HF-Bipolar Diathermy

- One function for various applications: Oertli Capsulotomy, HFDS, Endo-Diathermy, Diathermy Forceps
- Fine and directly controlled dosing of the HF energy
- High quality titanium handpieces and tips
- High efficiency even at low power output



MAKING THE
DIFFERENCE WITH
SOPHISTICATED
DESIGN



«I have performed vitreoretinal interventions for decades. Oertli devices have always accompanied me reliably from the beginning. Regular maintenance enhances the longevity of the equipment. The OS 4 unites high-tech developments with sophisticated design and utmost user-friendliness. The touchscreen is clearly arranged, and due to the dark background, glare-free. The broad range of setting options offers the desired parameters to every surgeon, no matter whether he/she is a beginner or an expert user. This way, you can learn how to perform surgeries with great safety.»

PD Dr. Ulrike Stolba

Eye Department of the Rudolfstiftung
Vienna, Austria

OS 4TM – PERFORMANCE SPECTRUM

System

Fluidics system

- Peristaltic pump
- Venturi pump
- SPEEP pump
- Gravity infusion, electric pole drive
- Active infusion (GFI)
- Tubing system with integrated closed pressure sensor
- Auto-venting
- Limitable reflux
- Preop, self-testing and reset functions

Operating

- Control panel with 15" touch glass screen
- Audio signals
- NEW:** Extended voice confirmations in five languages

Pedal

- Dual linear multifunction pedal
- Wireless
- Integrated laser operation
- NEW:** Over 100 setting options
- Individual programming for up to 50 surgeons
- Dual linear or linear
- Reflux function
- Rest position

Anterior segment

HF function

- Capsulotomy
- HFDS ab interno MIGS Glaucoma surgery
- Conjunctiva coaptation
- Macro diathermy
- Endo diathermy

Phaco function

- NEW:** 70% shorter phaco tests
- Three programme memories with DirectAccess
- Ultrasonic phaco with auto-tuning
- NEW:** Vacuum override function
- easyPhaco handpiece with six piezo crystals
- Linear, PULSE, BURST and CMP
- easyPhaco, CO-MICS and MICS technology
- Dual linear phaco

I/A Function

- Three programme memories with DirectAccess
- Continuous irrigation

Anterior segment vitrectomy

- Three programme memories
- Dual pneumatically operated guillotine cutter
- Linear 10 to 10,000 cuts/min
- Single Cut
- Irrigation/Aspiration/Cut
- Irrigation/Cut/Aspiration
- NEW:** Flexible changeover between Aspiration/Cut and Cut/Aspiration

Posterior segment

Endo illumination

- Two independent Power LED light sources
 - NEW:** 45% more light output
 - NEW:** Enhanced control range from high to low lumens
 - NEW:** Power LED Plus light source with adjustable colours
- Filter-free output

Vitrectomy

- Three programme memories with DirectAccess
- Pneumatically driven Continuous Flow Cutter
- Linear or progressive, 10 to 10,000 cuts/minute
- Single Cut
- Endo phaco

Air

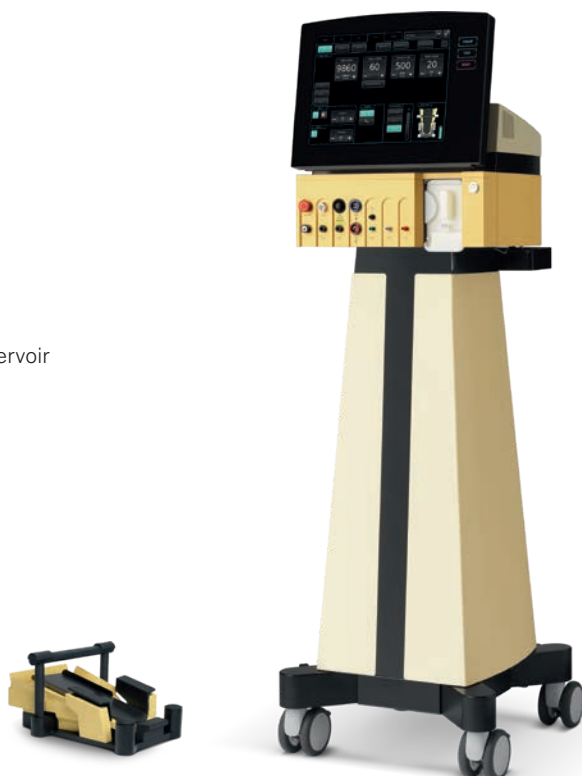
- Fluid/air exchange
- Fluid/air changeover via pedal
- Constant pressure control with compensation reservoir
- Three programme memories with DirectAccess
- Alarm function

Visco

- Injection
- Extraction
- Linear pedal control

Endo laser

- Green endo laser 532 nm
 - NEW:** Fully automated laser user protection filter
 - NEW:** Acoustic laser protection signals
- Laser power controllable with pedal
- Laser class: pilot beam 3R, working beam 4



MAKING THE DIFFERENCE IN EYE SURGERY

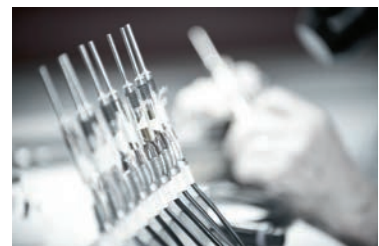
Oertli makes the difference. With its excellent surgical devices and instruments that make surgical interventions safer, easier and more efficient. With lasting innovations and new technology that have long-term impact on ophthalmology. With superb service and real added value for surgeons and OR personnel. And, in its consistent pursuit to accomplish the very best for customers, users and patients.

Setting standards

The name Oertli stands for Swiss quality of the highest precision and reliability. We develop and produce our products exclusively in Switzerland, in the St.Gall Rhine Valley. Thanks to this, we can rely on excellently trained employees and a dynamic environment and have the quality and conditions of our products under our own control.

In the course of its company history, Oertli has developed numerous innovations that have had a sustainable impact on eye surgery. Such success, however, does not make us slow down – on the contrary. We spend every day refreshing our research spirit making sure our innovative thirst will have new challenges again and again.

Although we are present in the whole world and gear ourselves towards the international market, in our hearts, we will always remain an independent family business with a good backbone, strong roots, solid financing and active teamwork. Anyone who works for Oertli does so with great commitment and motivation. As everyone gives their best, we can position ourselves on the market with great confidence. On this basis, we make the difference – for eye surgery, for our customers, and for patients.





Distribution network

Oertli commits itself to the Berneck location in Switzerland. It is here that ideals and innovations come to exist, and here that our devices and instruments are developed and manufactured. To ensure our products can be used in the whole world, we rely either on our own distribution companies or independent distribution partners, depending

on the relevant region. In every case, our ophthalmology customers throughout the world can count on competent and reliable contact persons. They offer excellent on-site service, can inform and advise you on our entire product range and have been perfectly trained for work with our products.

Information on trademark protection

Oertli®, CataRhcx3®, easyPhaco®, easyTip®, HFDS®, SPEEP® as well as the Oertli logo are registered trademarks of Oertli Instrumente AG.

Faros®, OS4®, DirectAccess®, Caliburn®, ParaProg®, True Flow Control™ and GoodLight LED™ are trademarks of Oertli Instrumente AG.

References

- 1 Compared to previous OS 4 generation with 27G and 25G endo illuminators at 100% intensity in lumen
- 2 Compared to the previous OS 4 generation with 25G endo illuminators panorama at low lumen with 5% intensity, working distance 15 mm
- 3 Compared to the previous OS 4 generation in the duration of the phaco test

MAKING THE DIFFERENCE IN SWITZERLAND





As a Swiss family-owned company
with a long tradition, we focus on
what is important: quality, reliability,
safety, innovation and the needs of
our customers.

We make the difference – for you
and your patients.

EYE SURGERY. SWISS MADE.

**Surgical
platforms**



OS 4™



Faros™



CataRhex 3®



Oertli Instrumente AG
Hafnerwissenstrasse 4
9442 Berneck
Switzerland

T +41 71 747 42 00
F +41 71 747 42 90

www.oertli-instruments.com

Not available for sales in the US