

# capsulo™

**BRIGHTEN** YOUR  
**YAG** AND RETINAL  
LASER TREATMENTS



 **Quante  
medical**  
BY LUMBIRD MEDICAL

**Capsulotomy and Iridotomy**  
Photocoagulation (optional)

# capsulo™

## YAG Laser

### PRECISE, POWERFUL...

- Exclusive high quality optics optimized for enhanced viewing of the anterior and posterior segments
- Advanced illumination enriching operator's view
- Next-generation Nd: YAG laser cavity



Proprietary 2-position illumination tower offering dual illumination angles

Wide ranging Anterior and Posterior Offset

Continuously variable energy level 3Hz repetition rate

Advanced **two-point green** aiming beam for rapid and precise tissue targeting

**FULLY INTEGRATED,  
EASY TO USE AND  
HIGHLY VERSATILE.**

**The all-in-one YAG laser  
solution for the discerning  
ophthalmologist.**

High Quality optics

Standby/Ready  
status LEDs

## **ADVANCED FUNCTIONAL DESIGN**

Slit Lamp manufactured  
and designed by  
Lumibird Medical

Full touch  
screen control



# A GLAUCOMA, CATARACT AND RETINA LASER ALL-IN-ONE

When combined with a Vitra 2 photocoagulator, Capsulo offers an ideal all-in-one laser platform

- Peripheral Iridotomy
- Posterior Capsulotomy
- Single/Multispot Retinal Photocoagulation

## ADVANCED ILLUMINATION

Variable light tower height offering to 2 different illumination angles:



**LOW POSITION**  
for diagnosis/treatment of the anterior segment utilizing a 16° illumination angle



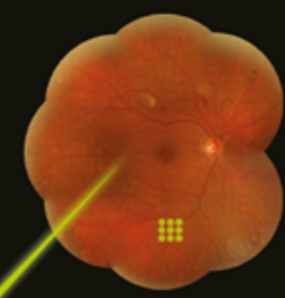
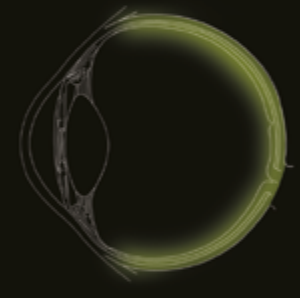
Posterior Capsulotomy



Peripheral Iridotomy



**HIGH POSITION**  
for diagnosis/treatment\* of the posterior pole utilizing a 7,5° illumination angle



Pan-Retinal Photocoagulation



TRIPLE ARCS



SQUARE



CIRCLE



SINGLE SPOT

\*When combined with a Vitra 2 photocoagulator

# capsulo™

## TECHNICAL SPECIFICATIONS



	Capsulo - YAG Laser	Vitra 2 - Photocoagulator (Optional)
<b>Laser Source</b>	Q-switched Nd:YAG	Frequency doubled Nd:YAG
<b>Wavelength</b>	1064nm	532 nm
<b>Energy</b>	0.3 to 10mJ per pulse continuously variable	1500 mW (at tissue)
<b>Pulse Width</b>	4ns	10 ms to continuous
<b>Pulse mode</b>	1, 2 and 3 pulses per shot	Single, repeat, painting, continuous
<b>Spot Size</b>	10µm (86.4% energy in diameter) / 8µm FWHM	Single Spot: 50 µm to 400 µm Multispot: 100 µm to 400 µm Patterns: square, circle, triple arc, single spot
<b>Offset (Anterior and Posterior)</b>	0 to +/- 500µm	N/A
<b>Illumination tower</b>	2 Positions: Low position: 16° illumination angle High position: 7,5° illumination angle	N/A
<b>Aiming Beam</b>	Green 515nm	Red 635-650 nm
<b>Repetition Rate</b>	up to 3 Hz	N/A
<b>Magnification</b>	10x, 16x, 25x	N/A
<b>Cooling</b>	Air cooled	By Peltier effect
<b>Size (laser only)</b>	65 (H) x 67 (W) x 48 (D) cm 25.6"(H) x 26.4"(W) x 18.9"(D)	18 (H) x 19,5 (W) x 30 (D) cm 7.1" (H) x 7.7" (W) x 11.8" (D)
<b>Weight (laser only)</b>	24,15kg - 52,1 lbs	<b>5.6 kg - 12.3 lbs</b>
<b>Power requirements</b>	100 to 240 VAC, 250 VA, 50/60 Hz	100 to 240 VAC, 250 VA, 50/60 Hz
<b>Laser indirect ophthalmoscope</b>	N/A	Keeler Vantage Plus (external laser adapter)
<b>Laser slit lamp compatible with QM Vitra 2 laser</b>	Yes	N/A

Specifications are subject to change without notice.  
©2022. Quantel Medical, Capsulo™ and Vitra 2® are trademarks of Quantel Medical. All rights reserved.

[www.quantel-medical.com](http://www.quantel-medical.com)



**Manufacturer**  
Quantel Medical  
1 Rue du Bois Joli - CS40015  
63808 Cournon d'Auvergne - France  
Tel.: +33 (0)4 73 745 745  
Email: [contact@quantelmedical.fr](mailto:contact@quantelmedical.fr)  
ISO 9001 : 2015 - ISO 13485 : 2016

**Headquarters**  
Lumibird Medical  
1, Rue du Bois Joli - CS40015  
63808 Cournon d'Auvergne - France  
Tel.: +33 (0)4 73 745 745



A brand of  **LUMIBIRD  
MEDICAL**

QUANTEL MEDICAL - ELLEX - OPTOTEK MEDICAL